

## Stainless Steel Stock Sinks

*Thickness: 18 Gauge Stainless Steel*

*Finish: Satin Brushed*

*Bottom Grid Set Available*



**PL-801L** 29"x 18.75"x 9"



**PL-801R** 29"x 18.75"x 9"



**PL-802** 30"x 16.5"x 9"



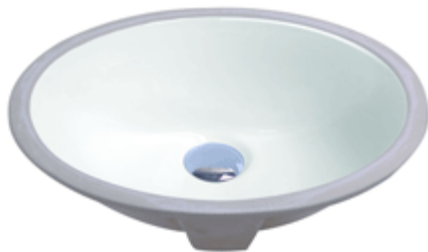
**PL-868** 28"x 16"x 9"



## Porcelain Stock Sinks

*Available in White or Bisque*

**Oval** 17"x 14"



**Square** 18"x 13"

